

# Africa Safari Maasai Boma

## Relaxing in African style

Africa Safari Maasai Boma stands out as truly unique. Situated amidst the stunning landscapes between Lake Natron to the east, Serengeti National Park to the west, and Ngorongoro to the south, its location is unparalleled. The accommodation itself is a tribute to Maasai culture, featuring Safari Comfort Bungalows designed as traditional Maasai bomas: round mud houses with thatched roofs, offering simplicity, solidity, and comfort. Each bungalow boasts a spacious bedroom decorated with authentic Maasai artifacts and beadwork. Furnished with a king-size bed and a single bed, the room includes an ensuite bathroom with a walk-in shower, toilet, and washbasin. Additionally, there are 5 Maasai Safari huts available, featuring shared toilet and shower facilities.

Africa Safari Maasai Boma is only a few minutes drive from the village of Ololosokwan and just 15 minutes away from Serengeti's Klein's Gate. Game drives to the famous river crossing location, where the Great Migration takes place, are possible from the camp, while the nearby Pololeti Game Reserve has also proved to be a hidden wildlife treasure. Game drives here are of unsurpassed quality. Accompanied by a ranger, night game drives, and bush walks can also be done in this area

**Wildlife knows no boundaries!**

Open all year round - 365 days - 24/7



AFRICA SAFARI

**MAASAI BOMA**

Serengeti Klein's Gate - Ngorongoro district

[www.paradise-wilderness.com](http://www.paradise-wilderness.com)  
[info@paradise-wilderness.com](mailto:info@paradise-wilderness.com)



+255 699 065 829





## LOCATION

### Klein's Gate Serengeti, Ololosokwan, Ngorongoro district

Originally built to break the journey between Africa Safari Lake Natron (110 km to the East) and Africa Safari Serengeti Ikoma (80 km to the West), Africa Safari Maasai Boma allows for an extra night in an amazing piece of nature where the wildlife from the Serengeti wanders past. Africa Safari Maasai Boma is only 15 minutes drive away from Klein's Gate which provides access into the Serengeti National Park and Pololeti Game Reserve.

GPS: 1°52'28.1"S 35°19'07.6"E



## FACILITIES

### Everything you need (and more)

- Reception area
- Bar and restaurant
- Campfire
- Swimming pool
- Safari Comfort Bungalows
- Safari Comfort Family Bungalows
- Maasai Safari Huts and Campsite: with shared toilets and shower
- Free Wi-Fi in restaurant and bar
- Electricity on solar energy and generator
- Water heated by solar energy
- 24 hr security
- Safari jeep with pop-up roof for hire (no self-drive) on request



## PARK INFORMATION

### What you should know

Africa Safari Maasai Boma is located just outside Serengeti National Park and Pololeti Game Reserve, so no concession fees apply to overnight stays. However, regular TDL and village fees still apply.

Visits to the Serengeti National Park (TANAPA) and Pololeti Game Reserve (NCAA) are subject to entrance fees, both for individuals and vehicles. Agents must submit these fees electronically online, while for private visitors, Africa Safari Maasai Boma can assist.

	Number of rooms	Guests per room	Bedroom size (sqm)	Bathroom size (sqm)	Balcony size (sqm)	Total room size (sqm)	King size bed	Single bed	Indoors seating area	Safe box	Wifi reception in Main building (free)	Mosquito net	Complimentary toiletries	Drinking water	Torch/flash light	Charging points (phone and camera)	Maximum guests per room
Safari Comfort Bungalow	10	2+1	32	7	3	42	1	1	•	•	•	•	•	•	•	•	3
Safari Comfort Family Bungalow (min 4 guests)	2	2+1+1	65	15	5	85	2	1	•	•	•	•	•	•	•	•	5
Maasai Safari Hut	5	1+1															

Guests per room: 2 = Double, 1 = Single



# WHY GO THERE?

- ✓ Breath-taking location
- ✓ The only affordable accommodation in the area
- ✓ Perfect place to stay between Serengeti and Lake Natron
- ✓ Experience the Maasai way of life
- ✓ Close proximity to the game reserve and national park
- ✓ Walking safaris & night game drives possible
- ✓ Swimming pool
- ✓ Complimentary use of pool towels, safety deposit box and Wi-Fi





## Safari Comfort Bungalow

Maximum occupancy  
**3 guests**



Looking to experience staying in a traditional Maasai style hut, combined with all the comforts of home? The thatched, 'rondavel', meaning round in shape, the Safari Comfort accommodations are cosy, comfortable and decorated with traditional beadwork and artefacts. The bungalow is equipped with a king-size bed and a single bed and an ensuite bathroom with a walk-in shower, a toilet and a washbasin. Your private terrace offers beautiful views of the Ololosokwan Valley. There are 10 units available.

- ✓ King-size bed (180 x 200) and a single bed (90 x 200)
- ✓ Fully equipped bathroom with walk-in shower
- ✓ Coffee and tea-making facilities
- ✓ Inside seating area
- ✓ Charging points for mobile phones and cameras
- ✓ Safety deposit box
- ✓ Quality mattress and bed linen
- ✓ Mosquito net
- ✓ Terrace
- ✓ Total room size 42 sqm



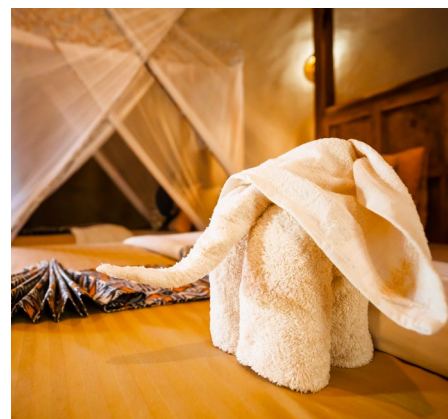
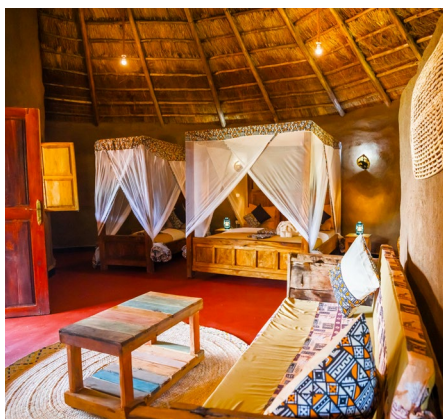
## Safari Comfort Family Bungalow

Maximum occupancy  
**5 guests**



Also built to resemble a traditional Maasai style hut, the larger Safari Comfort Family Bungalows allow the whole family to stay together in one "manyatta" as the Maasai would traditionally do. The Comfort Family Bungalow is equipped with 2 king-size beds and a single bed. The ensuite bathroom features a walk-in shower, toilet and washbasin. The bungalow offers a comfortable indoor sitting area as well as an outside terrace with views of the Ololosokwan Valley. There are 2 units available

- ✓ 2 King-size beds (180 x 200) and a single bed (90 x 200)
- ✓ Fully equipped bathroom with walk-in shower
- ✓ Coffee and tea-making facilities
- ✓ Inside seating area
- ✓ Charging points for mobile phones and cameras
- ✓ Safety deposit box
- ✓ Quality mattress and bed linen
- ✓ Mosquito net
- ✓ Terrace
- ✓ Total room size 85 sqm





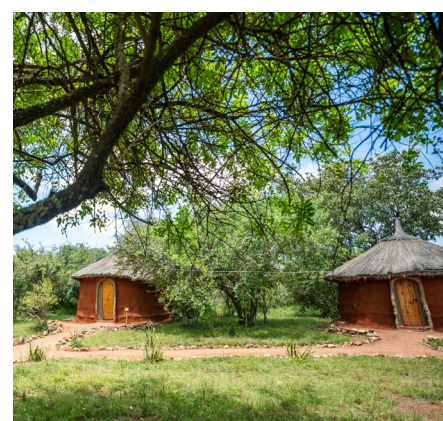
# Maasai Safari Hut

Maximum occupancy  
**2 guests**



Built with an earthen floor, traditional plasterwork and a thatch roofing, the Maasai Safari Huts are quaint and simple. The furniture is thoughtfully made from organic materials such as twigs and branches and Maasai blankets, with their vibrant colours and intricate patterns, complete the feeling of authenticity. Sit on the outside chairs and share your safari experience with your neighbours, just as the Maasai elders would do. It doesn't get more local than this! There are 5 units available.

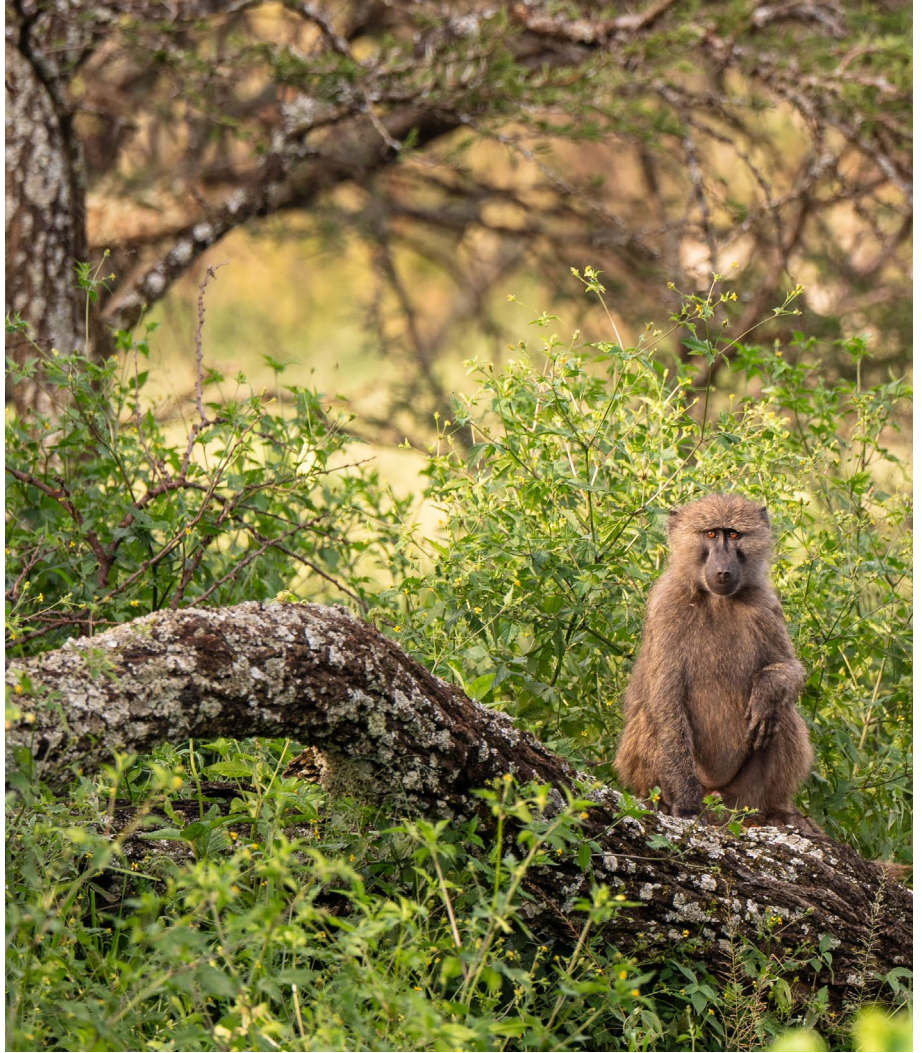
- ✓ 2 Single beds (90 x 200)
- ✓ Shared toilet and (hot water) shower facilities
- ✓ Close to restaurant and bar
- ✓ Private location
- ✓ Very suitable for budget travellers and backpackers



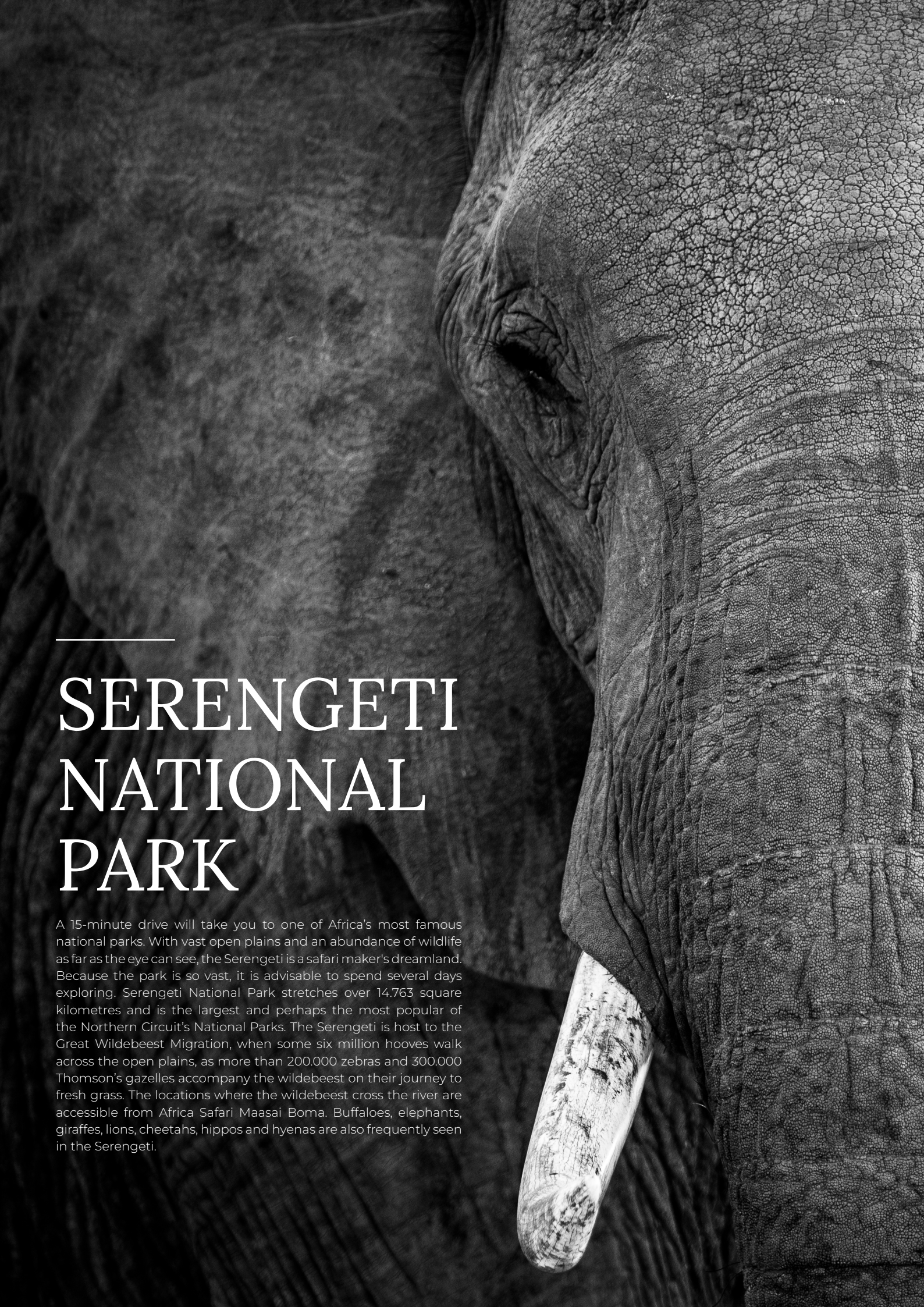


## Pololeti Game Reserve

Pololeti Game Reserve, is part of the Loliondo Game Controlled Area, operating under the Ngorongoro Conservation Area Authority (NCAA), an important area for breeding wildebeest, and a corridor for the animals coming from the Serengeti National Park. Because wildlife knows no boundaries, you will find a wide variety of animals in the game reserve, such as hunting lions, roaming elephants, grazing buffalo, running antelope and more







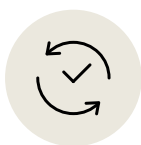
---

# SERENGETI NATIONAL PARK

A 15-minute drive will take you to one of Africa's most famous national parks. With vast open plains and an abundance of wildlife as far as the eye can see, the Serengeti is a safari maker's dreamland. Because the park is so vast, it is advisable to spend several days exploring. Serengeti National Park stretches over 14,763 square kilometres and is the largest and perhaps the most popular of the Northern Circuit's National Parks. The Serengeti is host to the Great Wildebeest Migration, when some six million hooves walk across the open plains, as more than 200,000 zebras and 300,000 Thomson's gazelles accompany the wildebeest on their journey to fresh grass. The locations where the wildebeest cross the river are accessible from Africa Safari Maasai Boma. Buffaloes, elephants, giraffes, lions, cheetahs, hippos and hyenas are also frequently seen in the Serengeti.



## Highlights



15 minutes from Serengeti's Klein's Gate.



Perfect overnight between Lake Natron & Serengeti



Night game drive & walking trails are possible



Located near Pololeti Game Reserve



Traditional Maasai style bungalows and huts



Amazing views with the Kenyan Maasai Mara in the background



Wi-Fi by satellite



Only 1.1 km from the main road



Unique location and affordable



Swimming pool

## Activities

### HONEY PROJECT IN OLOLOSOKWAN

Curious about the unique flavour of Maasai honey? Support Maasai female beekeepers by visiting their Stingless Bee apiary. Learn how honey is harvested, filtered, and packaged. Explore beehives and discover more about wild and farmed honey. Visit the honey shop for natural products and pure Maasai honey. The trip concludes with a Q&A, photo moment, and hive adoption opportunity



### EXCELLENT GAME DRIVES

The Pololeti Game Reserve, adjacent to Serengeti National Park, is teeming with wildlife all year round and the guide will bring you as close as possible to your favourite animals. A meal in the bush or a sunset drink with beautiful African vistas will complete your perfect day in Africa.





## MAASAI SUNSET WALK

Embark on an uphill hike with your Maasai guide, discovering plants and shrubs used by the Maasai for medicine and other purposes. Keep your eyes open for clues left by the inhabitants of this majestic landscape - animal droppings scattered like breadcrumbs, each telling a story about the creatures that call this place home



3

## NIGHT GAME DRIVE

Take the opportunity to explore the area at night. It is a great feeling to be in this remote and pristine area in the dark. The sounds of all the different animals, the glowing eyes of the nocturnal animals, and exciting encounters with wildlife at night, make it magical. Look out for the Genet cat, Aardvark, Mongoose, Serval, Bushbaby and with a little luck... a Leopard!



4

## GUIDED WALKING SAFARI WITH A SUNDOWNER IN POLOLETI GAME RESERVE

Become part of the landscape and enjoy the walk under the watchful eye of an armed ranger. During the excursion, you can learn from the guide how to detect and read different animal species and how traditional medicines are made from plants. Learn to appreciate the little things too. Ever heard of The Small Five? Afterwards, enjoy a well-deserved sundowner in the bush!



5



# Safari Jeep

A four-wheel drive safari jeep with a pop-up roof, including driver and fuel, is available for hire on request. Our driver guides are very knowledgeable and will ensure you have as much time as you need to ask questions, take pictures and enjoy the incredible landscape.



Distance in km.	Africa Safari Arusha	Africa Safari Lake Natron	Africa Safari Serengeti Ikoma	Africa Safari Serengeti Kusini	Africa Safari South Serengeti	Africa Safari Karatu	Africa Safari Rift Valley	Africa Safari Lake Manyara	Africa Safari Selous	Serengeti National Park Klein's Gate entrance
<b>Africa Safari Maasai Boma</b>	340	130	110	220	175	265	420	240	1137	10
<b>Reachable without overnight stop</b>	NOT ADVISABLE Overnight in Africa Safari Lake Natron	YES	YES	YES	YES	YES	NOT ADVISABLE Overnight in Africa Safari Serengeti South or Africa Safari Lake Natron	NOT ADVISABLE Overnight in Africa Safari Lake Natron	NO Overnight in Africa Safari Lake Natron, Africa Safari Arusha, Dar Es Salaam	

## DEVELOPMENTS

All main roads in the area are now maintained by TanRoads. Between Mto wa Mbu (Lake Manyara) and Klein's Gate, there are plans to build a full tarmac road to make travel for Tanzanians and tourists more comfortable (almost 50 km has already been completed). TANESCO (Tanzania's electricity company) is also working on improving the electricity network, by constructing power lines between the 2 destinations.









# Most common wildlife in the area



African wild dog (\*)  
Hyena  
Impala  
Topi  
Hartebeest



Thompson gazelle  
Eland (\*)  
Wildebeest  
Giraffe  
Zebra  
Ostrich

A massive variety of birds  
and birds of prey



Mongoose  
Genet Serval (\*\*)  
Leopard (\*\*)  
Aardvark(\*\*)  
Porcupine(\*\*)

(\*) Migrant

(\*\*) Nocturnal

MONTHS	Jan	Feb	Mar	Apr	May	Jun	Jul	Aug	Sep	Oct	Nov	Dec
Game drives	•	•	•	•	•	•	•	•	•	•	•	•
Night game drives	•	•	✱	✱	✱	•	•	•	•	•	•	•
Bush walk	•	•	•	•	•	•	•	•	•	•	•	•
Chance of migration in the wide area						•	•	●	●	●	•	•
Cat sightings	•	•	•	•	•	•	•	•	•	•	•	•
Green season			○	•	○							

● Mara area

✱ Subject to weather

○ Half month conditions



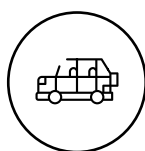
## Airstrip / Airport

Nearest airport - Seronera (SEU)  
104 km / 2.5 driving hrs by vehicle.

Nearest airstrip - Lobo, Serengeti  
33 km / 1 driving hr by vehicle.

Alternative airstrip  
Kogatende - Serengeti  
78 km / 1.5 driving hrs by vehicle.

Alternative domestic airport  
Arusha Airport (ARK)  
350 km / 8 driving hrs by vehicle advisable to overnight in Africa Safari Lake Natron.



## From Africa Safari Maasai Boma to...

Serengeti National Park Klein's Gate entrance - 10 km

Pololeti Game Reserve game driving - 10 km



## Good to know

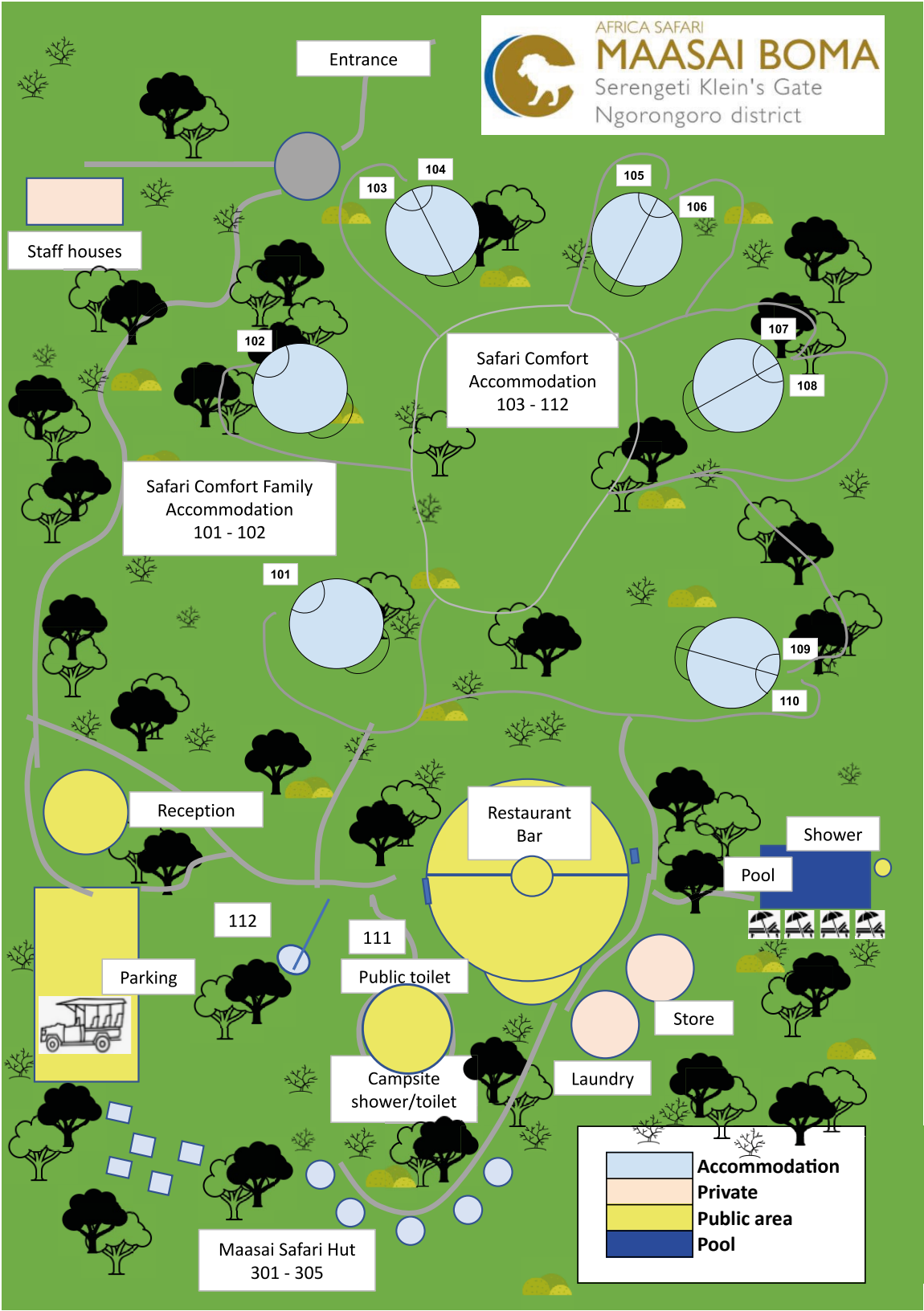
Altitude: 1850 mtr  
Day time temp: +/- 25°C  
Night time temp: +/- 15°C  
Green season: April-May

ACCOMMODATION  
Safari Comfort Bungalow (10)  
Safari Comfort Family Bungalow (2)  
Maasai Safari Hut (5)

MEAL PLAN  
Bed and breakfast  
Half board  
Full board

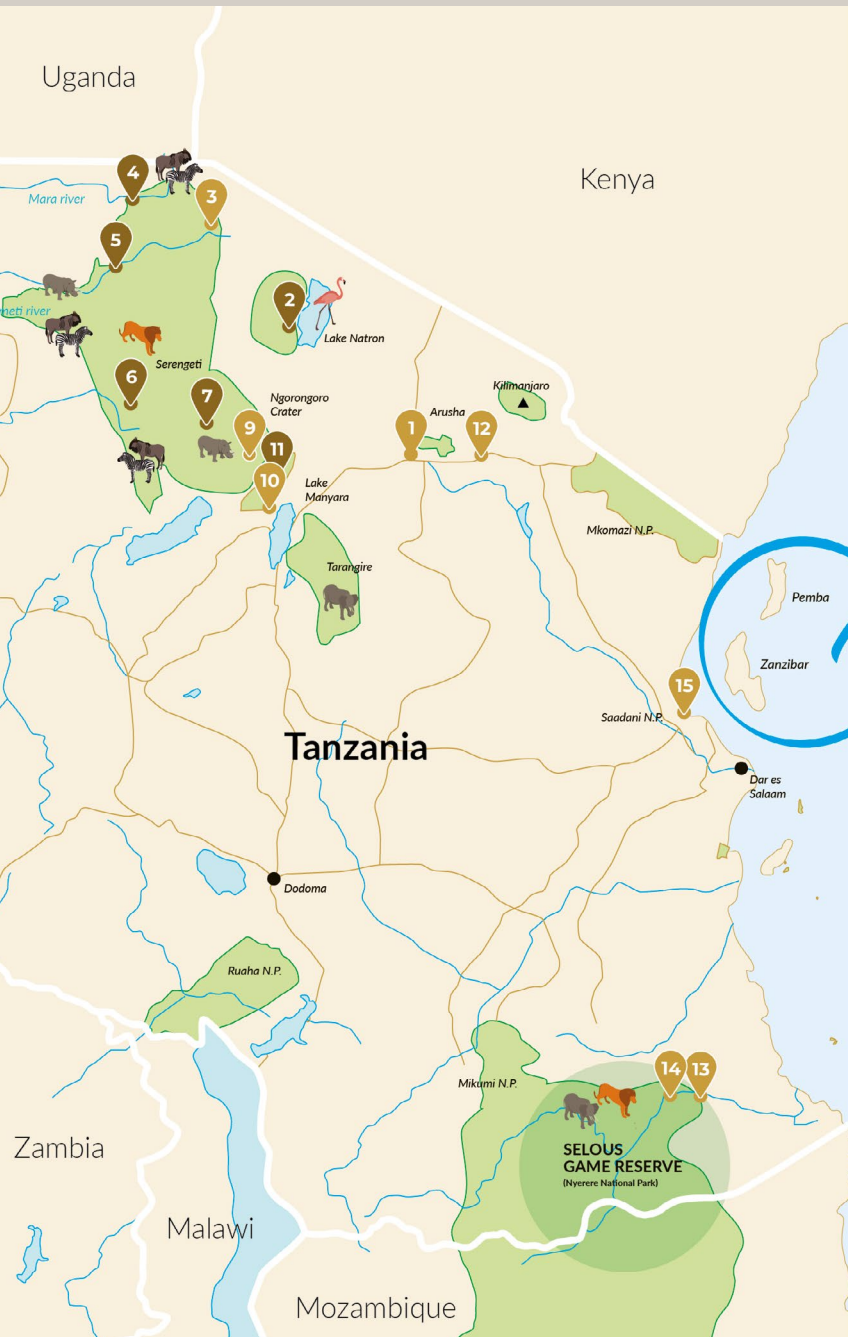
CREDIT CARD - CURRENCY  
Master card / Visa card / Online payment  
TZS, USD and Euro







## Other accommodations in the Paradise & Wilderness group



### TANZANIA

1. Africa Safari Arusha
2. Africa Safari Lake Natron
3. Africa Safari Maasai Boma (*Klein's Gate*)
4. Africa Safari Serengeti Kogatende (*Under construction*)
5. Africa Safari Serengeti Ikoma
6. Africa Safari Serengeti Kusini
7. Africa Safari South Serengeti (Ndutu)
9. Africa Safari Karatu
10. Africa Safari Rift Valley (Tarangire/Lake Manyara)
11. Africa Safari Lake Manyara
12. Africa Safari Kilimanjaro (*Under construction*)
13. Africa Safari Selous
14. Africa Safari Nyerere
15. Africa Safari Saadani (*Under construction*)



### ZANZIBAR

1. Reef & Beach Resort \*\*\*\*
2. Paradise Beach Resort \*\*\*\*
3. Zanzibar Bay Resort \*\*\*\*
4. Dream of Zanzibar \*\*\*\*\*
5. Shaba Boutique Hotel \*\*\*\*
6. Paradise Island Resort \*\*\*\*\* (*Under construction*)
7. Corals of Zanzibar Beach Resort \*\*\* (*Under construction*)



AFRICA SAFARI

**MAASAI BOMA**

Serengeti Klein's Gate - Ngorongoro district

[www.paradise-wilderness.com](http://www.paradise-wilderness.com)  
[info@paradise-wilderness.com](mailto:info@paradise-wilderness.com)

+255 699 065 829



More  
contact  
info



Website  
Maasai  
Boma



Photo  
Gallery



Price  
List

