

# Africa Safari Karatu

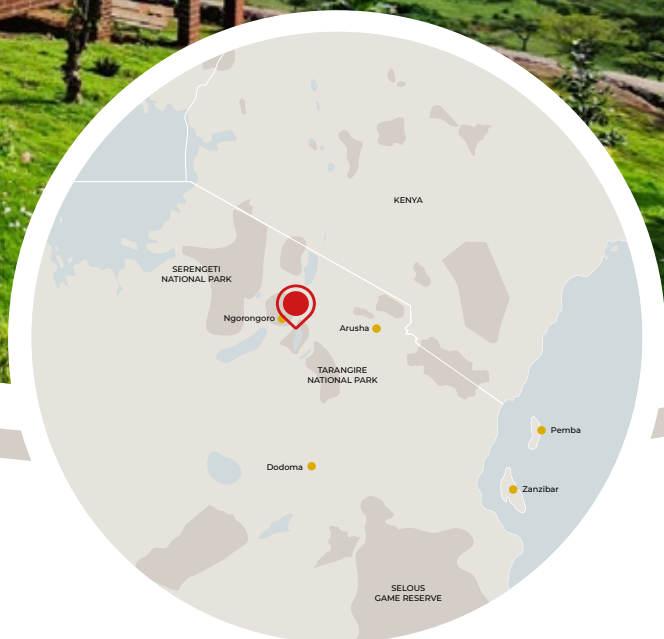
## Relaxing in African style

Africa Safari Karatu is a luxury safari lodge located on the edge of the Ngorongoro Conservation Area. The area became popular with early settlers and farmers because of its cool climate, green hills, and beautiful views, with coffee being one of the most important crops. The rolling slopes of the extinct Ol Deani volcano are a striking feature of the landscape. The accommodation is located on top of a hill and offers a stunning view of the Northern Highlands, Lake Eyasi, and its surroundings.

Due to the ideal location, Lake Manyara National Park and the world-famous Ngorongoro Crater are easily accessible from Africa Safari Karatu. Africa Safari Karatu offers two types of accommodation; Safari Comfort Bungalows and Safari Luxury Bungalows, both offering you all the luxury you wish for before or after your safari! As the property is built on an elevation, not only do the bar, restaurant, and

swimming pool boast amazing vistas but each bungalow has its own balcony with 180-degree views across the endless landscape. The addition of a Spa in July 2024, will make Africa Safari Karatu a wonderful wellness retreat as well.

**The stunning views of the Northern Highlands and Lake Eyasi at Africa Safari Karatu, along with its convenient location for accessing Lake Manyara National Park and the Ngorongoro Crater, make this accommodation a perfect spot to unwind before or after your safari.**



Open all year round - 365 days - 24/7





**LOCATION**  
**Perched atop a hill, providing a breathtaking 180-degree view of the Ngorongoro Highlands and Lake Eyasi.**

Africa Safari Karatu is located just outside the borders of the Ngorongoro Conservation Area, offering easy access to and from Lake Manyara National Park and the Ngorongoro Crater.

GPS: 3°23'10.9"S 35°37'04.1"E



**FACILITIES**  
**Everything you need (and more)**

- Reception area

- Bar

- Restaurant

- Comfort Bungalows

- Luxury Bungalows

- Safari Tents with shared toilet and shower
- Swimming pool

- Spa & Wellness *(July 2024)*

- Boutique

- Free WIFI

- 24 hr security

- Safari jeep with pop-up roof for hire (no self-drive) on request



**PARK INFORMATION**  
**What you should know**

Africa Safari Karatu is located in the Ngorongoro Highlands, just a few kilometres away from the spectacular Ngorongoro Crater and Lake Manyara.

For the Crater entry, NCAA fees need to be paid, for entry to Lake Manyara National Park, TANAPA entry fees apply. Agents must pay these fees electronically online, whilst for private visitors Africa Safari Karatu can assist.

	Number of rooms	Guests per room	Bedroom size (sqm)	Bathroom size (sqm)	Balcony size (sqm)	Total room size (sqm)	King size bed	Single bed	Queen-size sofa bed	Indoors seating area	Safe box	Pool towel	Bathtub	Standing fans & hair dryers on request	Air-Conditioning	Smart TV	Mosquito net	Complimentary toiletries	Coffee/tea making facilities	Drinking water	Charging points (phone and camera)	Maximum guests in the room
Safari Comfort Bungalow	10	2+1	34	8	8	50	1	1		•	•	•		•	•		•	•	•	•	•	3
Safari Luxury Bungalow	28	2+2	42	10	8	60	1		1	•	•	•	•	•	•	•	•	•	•	•	•	4
Safari Tent	5	2+1																				2

2: Double bed | 1: single bed



# WHY GO THERE?

- ✓ Breathtaking landscapes
- ✓ Air-conditioned Safari Comfort Bungalows & Safari Luxury Bungalows
- ✓ Close to Ngorongoro Crater & Lake Manyara
- ✓ Perfect stop-over between Arusha & Serengeti
- ✓ Spa & Wellness facilities (July 2024)
- ✓ Affordable accommodation
- ✓ Various day tour activities available
- ✓ Farm-to-table dining from our vibrant vegetable farm





## Safari Comfort Bungalow

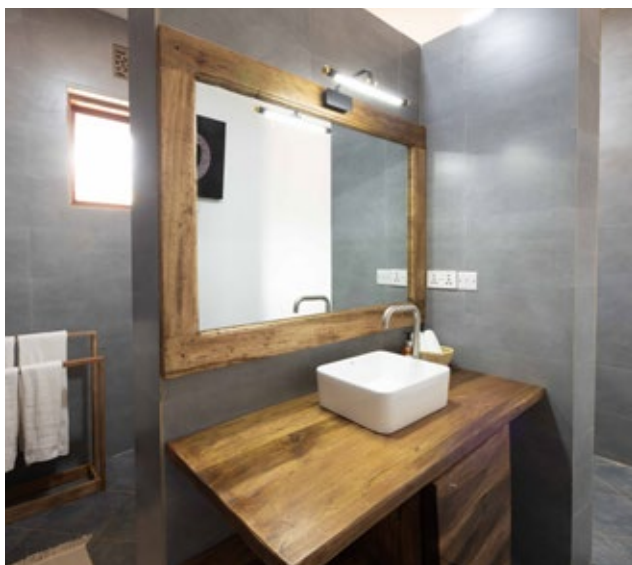
Maximum occupancy  
**3 guests**



Due to the raw brick walls, the Safari Comfort Bungalows exhibit a distinctive appearance and rustic charm. The rooms are furnished with a double bed and one single bed. Additional amenities include an ensuite bathroom with shower, toilet, and washbasin, as well as a seating area. The highlight is the private balcony with 180-degree views of Lake Eyasi to the left and the Ngorongoro Highlands to the right.

There are 10 units available.

- ✓ Double bed (180 x 200) and one single bed (90 x 200)
- ✓ Air-conditioning
- ✓ Fully equipped bathroom
- ✓ Coffee and tea-making facilities
- ✓ Inside seating area
- ✓ Charging points for mobile phones and cameras
- ✓ Safety deposit box
- ✓ Quality mattress and bed linen
- ✓ Mosquito net
- ✓ Balcony with seating area
- ✓ Total room size 50 sqm





## Safari Luxury Bungalow

Maximum occupancy  
**4 guests**



The raw brick walls of the Safari Luxury Bungalows contribute to a rustic, yet charming ambiance. These rooms are located on the ground and first floors and are furnished with a double bed and a sofa bed. There is an indoor seating area as well as a furnished private balcony with panoramic views of Lake Eyasi and the Ngorongoro Highlands that Africa Safari Karatu is renowned for. The ensuite bathroom features a washbasin, bathtub, shower, and toilet. Our luxury bungalows are also designed to interconnect to create a duplex-style accommodation, providing a comfortable and connected space for families or groups of friends travelling together.

There are 28 units available.

- ✓ Recommended maximum occupancy 3 adults or 2 adults and 2 children
- ✓ Double bed (180 x 200)
- ✓ Queen-size sofa bed
- ✓ Air-conditioning
- ✓ Smart TV
- ✓ Fully equipped bathroom with shower and bathtub
- ✓ Coffee and tea-making facilities
- ✓ Inside seating area
- ✓ Charging points for mobile phones and cameras
- ✓ Safety deposit box
- ✓ Quality mattress and bed linen
- ✓ Mosquito net
- ✓ Balcony with seating area
- ✓ Total room size 60 sqm





## Safari Tent

Maximum occupancy  
**2 guests**



Basic, but effective, the Safari Tents are the perfect low-cost opportunity to experience nearby Lake Manyara and Ngorongoro Crater. With 2 single beds inside and a small seating area outside, it's the perfect accommodation for those who want to go back to basics.

- ✓ Shared toilet and (hot water) shower facilities
- ✓ Close to pool, restaurant and bar
- ✓ Very suitable for budget travellers, backpackers and overland trucks

There are 5 units available.



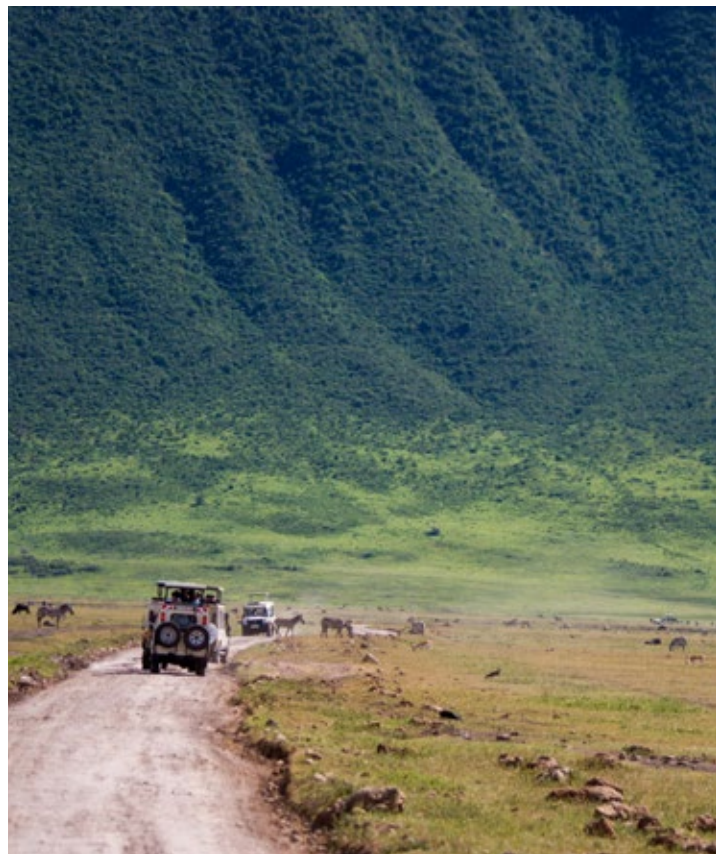




## Ngorongoro Crater

Nothing can prepare you for the breathtaking beauty of Ngorongoro Crater. As you stand on the viewpoint and behold the crater, with clouds drifting around the rim and a cool, mountainous breeze in the air, there is no mistaking the divinity of Mother Nature.

Ngorongoro Crater, recognized as a World Heritage Site, stands as the world's largest intact volcanic caldera, often hailed as the 8th Wonder of the World. Bounded by natural barriers, this protected area teems with wildlife and is home of the renowned 'Big Five,' including the African black rhino. You'll also encounter hyenas, zebras, elephants, and much more. A visit to the Ngorongoro Crater is an absolute must on any northern tour.





## Lake Manyara National Park

Lake Manyara National Park, an underrated gem among safari parks, offers great ecological diversity in a small area.

The alkaline soda of the lake attracts impressive numbers of birds that thrive on the water. More than 400 species have been identified and one of the highlights is the thousands of flamingos.

From the park's main entrance, the road winds through an area of groundwater forests. On the grassy banks of the lake, wildebeest, giraffe, zebra and the great buffalo can be seen grazing throughout the day. The park also offers excellent opportunities for hippo watching.

The mahogany and acacia trees are inhabited by the famous tree-climbing lions; with a bit of luck, you may see them lazing on tree branches.





## Highlights



Views of the Northern Highlands



Perfect overnight between Lake Manyara and the Ngorongoro Crater



WiFi by satellite



Swimming pool



Unique location and affordable



Only 10 km from Ngorongoro "Lodoare" Gate



Located in the centre of the Northern Safari Circuit



Beautifully decorated bungalows with brick wall design



Restaurant with panoramic views



Variety of activities

## Activities

### COFFEE FARM VISIT

Visit one of the many coffee farms during your stay and learn everything you need to know about coffee production. Karatu's weather conditions and fertile ground make it the perfect place for coffee crops. You will discover the process of planting coffee trees, harvesting and fermenting coffee berries, and how the beans are dried and sorted. Explore the rich history and culture of the coffee plantations, with coffee being one of Tanzania's biggest export products.



### HADZABE

Lake Eyasi is home to East Africa's last true hunter-gatherers - the Hadzabe. They expertly hunt animals such as antelope, gazelles, birds, and mongooses using bows and arrows. Additionally, they gather fruit, roots, and honey from the baobab trees. Possessing only what is essential for survival, like their bows, arrows, and a few cooking pots, the Hadzabe have their arrows crafted by another local tribe, the Datoga. The Datoga, skilled blacksmiths and herders, collect scrap metal and expertly fashion it into bracelets, arrowheads, and knives. They engage in trade, exchanging these crafted tools for food collected by the Hadzabe. Both tribes are known for their hospitality and will warmly welcome you.



### KARATU TOWN TOUR

Discover the town of Karatu, a colourful town and the gateway to the Ngorongoro Highlands. During this Town Tour you will visit the marketplace, which is a great place to look for souvenirs to take back home while mingling with the locals. Explore the rainbow coloured stalls and small shops, where you can find almost everything you wish for. Spices, vegetables, carved wooden ornaments and a lot of delicious local snacks such as fried cassava and bananas or chapati.







## Safari Jeep

A four-wheel drive safari jeep with a pop-up roof, including driver and fuel, is available for hire on request. Our driver guides are very knowledgeable and will ensure you have as much time as you need to ask questions, take pictures and enjoy the incredible landscape.



Distance in km.	Africa Safari Arusha	Africa Safari Lake Natron	Africa Safari Maasai Boma, via Lake Natron	Africa Safari Maasai Boma, via Serengeti	Africa Safari Serengeti Ikoma	Africa Safari Serengeti Kusini	Africa Safari South Serengeti	Africa Safari Lake Manyara	Africa Safari Rift Valley, via the 80 corners road	Africa Safari Rift Valley, via Lake Manyara NP	Africa Safari Selous
Africa Safari Karatu	142	143	273	266	206	165	125	33	100	85	933
Reachable without overnight stop	YES	YES	NOT ADVISABLE. Overnight in Africa Safari Lake Natron	NOT ADVISABLE. Overnight in Africa Safari South Serengeti	YES	YES	YES	YES	YES	YES	NO. Overnight in Africa Safari Arusha, Dar Es Salaam

### DEVELOPMENTS:

In the coming years the Karatu District Council is working on sustainably developing cultural tourism in the district. This will be done by positioning Lake Eyasi as a leading destination for cultural tourism experiences, while enhancing the conservation of natural and cultural heritage, protecting the wellbeing of the local community and attracting visitors with shared values. It is believed that in the long run, Karatu will be the second largest tourist town after Arusha city on the Northern circuit.



# Most common wildlife in the area (Ngorongoro and Lake Manyara)

Lodoare Gate, Ngorongoro, B144



Black rhino  
Elephant  
Buffalo  
Wildebeest  
Lion  
Leopard (\*)  
Cheetah



Hyena  
Impala  
Giraffe  
Zebra  
Hippo  
Lesser Flamingo  
Glossy Ibis



Hartebeest  
Eland  
Martial eagle  
Black heron  
Silvery-cheeked  
Hornbill  
Kori Bustard

*A massive variety  
of birds and birds  
of prey  
(\*) Nocturnal*

MONTHS	Jan	Feb	Mar	Apr	May	Jun	Jul	Aug	Sep	Oct	Nov	Dec
Game drives	●	●	●	●	●	●	●	●	●	●	●	●
Activities	•	•	•	•	•	•	•	•	•	•	•	•
Great migration Ngorongoro Conservation Area	•	•	•								•	•
Migratory birds	•	•	•	•						•	•	•
Dry season						•	•	•	•	•		
Green season			•	•	•					○	○	

● Best Game Drives ○ Half month conditions



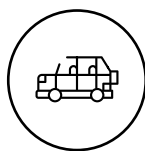
## Airstrip / Airport

Nearest airstrip - Lake Manyara  
Airstrip - 22 km / 30 minutes by vehicle

Alternative airstrip - Lake Ndutu  
airstrip - 122 km / 3 driving hrs by vehicle

Domestic airport - Arusha  
Airport - 135 km / 2.5 driving hrs by vehicle

International airport - Kilimanjaro  
International Airport (JRO) - 200 km / 3.5 driving hrs by vehicle



## From Africa Safari Karatu to...

Ngorongoro Lodoare  
entrance gate - 10 km

Naabi Hill Serengeti  
entrance gate - 116 km

Lake Manyara  
entrance gate - 32 km

Lake Eyasi - 50 km

Arusha - 140 km



## Good to know

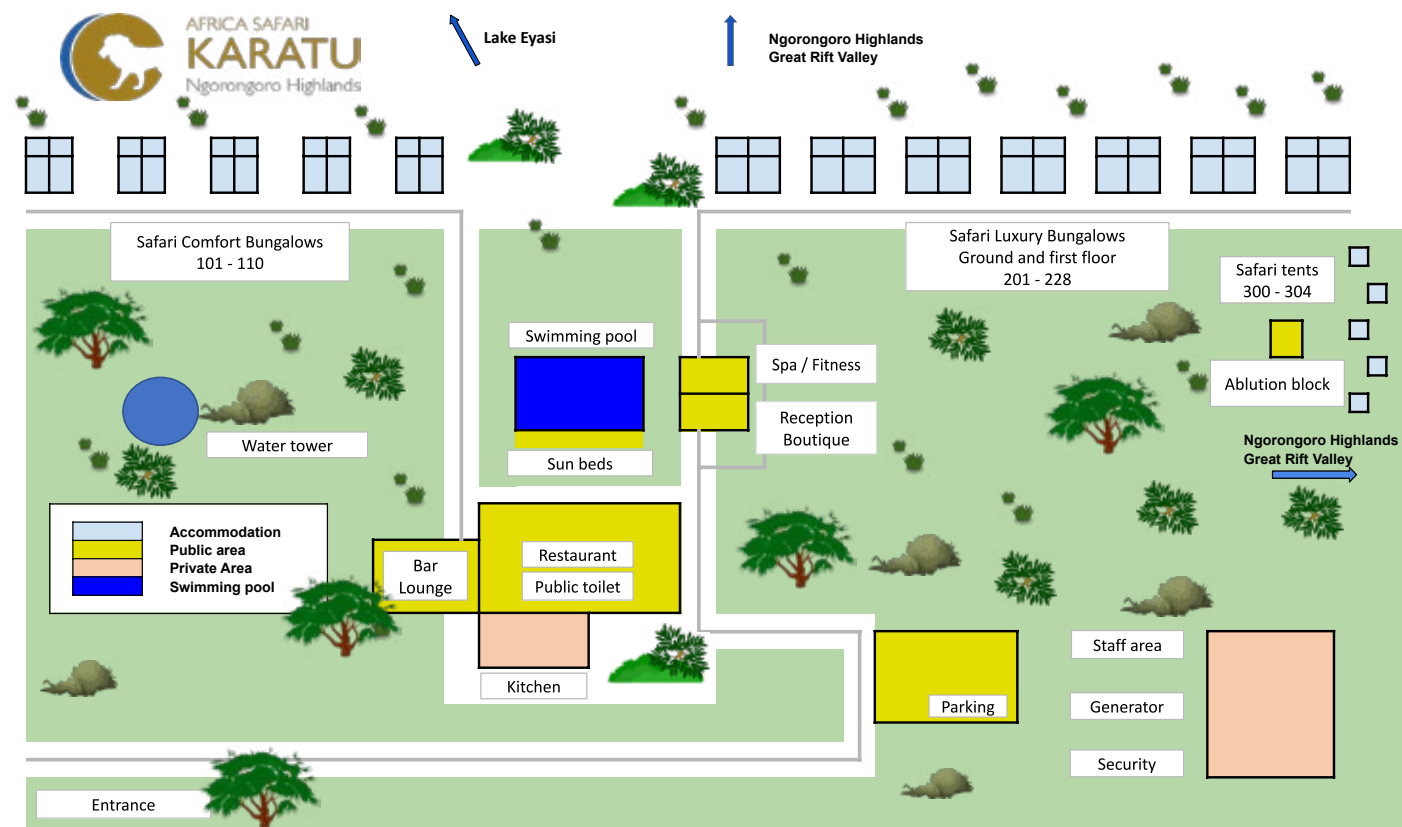
Altitude: 1480 mtr  
Day time temp: +/- 30°C  
Night time temp: +/- 15°C  
Green season: short Nov-Dec + long Mar-Apr-May

ACCOMMODATION  
Safari Comfort Bungalow (10)  
Safari Luxury Bungalow (28)  
Safari Tent (5)

MEAL PLAN  
Bed and breakfast  
Half board  
Full board

CREDIT CARD - CURRENCY  
Master card / Visa card / Online payment  
TZS, USD, EUR





Nestled within the surroundings of Africa Safari Karatu lies our own farm, a verdant oasis that sustains our commitment to providing fresh, locally sourced produce to our guests. Blessed with fertile soil and abundant sunshine, our farm cultivates an array of fruits, vegetables, and herbs. From crisp lettuce and vibrant green peppers to fragrant herbs, each ingredient is carefully harvested and delivered straight to our lodge kitchens, ensuring a farm-to-table experience that embodies freshness and quality.





## Other accommodations in the Paradise & Wilderness group



### TANZANIA

1. Africa Safari Arusha
2. Africa Safari Lake Natron
3. Africa Safari Maasai Boma (*Klein's Gate*)
4. Africa Safari Serengeti Kogatende (*Opening in 2025*)
5. Africa Safari Serengeti Ikoma
6. Africa Safari Serengeti Kusini (*Opening in 2024*)
7. Africa Safari South Serengeti (Ndutu)
9. Africa Safari Karatu
10. Africa Safari Rift Valley (Tarangire/Lake Manyara)
11. Africa Safari Lake Manyara
12. Africa Safari Kilimanjaro (*Opening in 2026*)
13. Africa Safari Selous
14. Africa Safari Nyerere (*Opening in 2024*)
15. Africa Safari Saadani (*Opening in 2025*)



### ZANZIBAR

1. Reef & Beach Resort \*\*\*\*
2. Paradise Beach Resort \*\*\*\*
3. Zanzibar Bay Resort \*\*\*\*
4. Dream of Zanzibar \*\*\*\*\*
5. Shaba Boutique Hotel \*\*\*\*
6. Paradise Island Resort \*\*\*\*\* (*Opening in 2026*)
7. Corals of Zanzibar Beach Resort \*\*\* (*Opening in 2025*)



[www.paradise-wilderness.com](http://www.paradise-wilderness.com)  
info@paradise-wilderness.com

+255 699 065 829



More  
contact  
info



Website  
Karatu



Photo  
Gallery



Price  
List

