

Africa Safari Nyerere

A bush retreat blended with casual luxury

Nestled along the border of Nyerere National Park in Southern Tanzania, Africa Safari Nyerere is a boutique safari lodge offering a serene escape into the heart of Africa's wilderness. The 25 thoughtfully designed bungalows, including 5 tailored for families, are immersed in the bush and boast a private pool and rooftop terrace, perfect for enjoying the surrounding landscape. Embrace the beauty of the natural world while indulging in luxurious comfort at our exclusive lodge.

We support local communities by utilising Inaya Zanzibar bath products, Chako recycled glassware, and handcrafted décor—blending sustainability, Tanzanian craftsmanship, and eco-friendly hospitality in every detail. The air-conditioned bungalows include ensuite facilities with bath, shower, toilet, and washbasin. The outdoor seating areas allow you to take full advantage of space during your getaway. The Premium Bungalows include a large living area, a second bedroom and a kitchenette, creating the

perfect environment for families and groups of friends travelling together. When you're not out on safari or relaxing in your spacious bungalow, the lodge has a restaurant, bar, swimming pool, and massage facilities. The Premium All-inclusive meal plan includes three sumptuous meals per day, a variety of alcoholic and non-alcoholic beverages as well as replenishment of the minibar once a day.

Carved off from the expansive Selous Game Reserve, Nyerere National Park is a haven for a rich array of wildlife. You can expect authentic safari adventures here, so along with game drives and river cruises, you can also go on guided walking safaris. With approximately 450 species recorded, keen birders will be in their element in Nyerere.

Africa Safari Nyerere delivers an authentic bush experience.



Open all year round - 365 days - 24/7



AFRICA SAFARI
NYERERE
Luxury Safari Lodge

www.paradise-wilderness.com
info@paradise-wilderness.com

+255 699 065 829





LOCATION

Selous Game Reserve/Nyerere National Park

Africa Safari Nyerere lies just outside the Selous G.R./Nyerere National Park in Tanzania, near the famous Rufiji River. Conveniently accessible by both road and air, this lodge is a mere 30-minute flight from Zanzibar, a 35-minute flight from Dar es Salaam, or a scenic 6-hour drive from the bustling city. The lodge also stands in close proximity to the park's Mtemere entrance gate, making this the perfect base for exploring the surroundings.

GPS: 7°45'01.1"S 38°14'23.4"E



FACILITIES

Everything you need (and more)

- Reception
- Bar
- Restaurant
- Air-conditioned Luxury Bungalows
- Air-conditioned Premium Bungalows
- Private plunge pools
- Swimming pool
- Massage facilities
- Stocked minibar
- Free Wi-Fi
- Electricity on solar energy and generator
- Water heated by solar energy
- 24 hr security
- Open-sided safari jeep for hire (no self-drive) on request



PARK INFORMATION

What you should know

For visits to Selous Game Reserve/Nyerere National Park conservation and entry fees do apply. These apply to both persons and vehicles.

Agents must pay these fees electronically online, while for private visitors, Africa Safari Nyerere can help.

	Number of rooms	Guests per room	Bedroom 1 size (sqm)	Bedroom 2 size (sqm)	Bathroom 1 size (sqm)	Bathroom 2 size (sqm)	Living room size (sqm)	Terrace size (sqm)	Plunge Pool incorp. into terrace (sqm)	Total room size (sqm)	King size bed	Sofa/single bed	Sofa/double bed	Indoors seating area	Safe box	Mosquito net	Complimentary toiletries	Drinking water	Torch/flash light	Bathroom size (sqm)	Maximum guests per room
Luxury Bungalow	20	2+1	24		8			16	6	48	1	1			•	•	•	•	•	•	3
Premium Bungalow	5	2+1+1+2	12	15	6	8	24	22	8	95	1	2	1	•	•	•	•	•	•	•	6

2: Double bed | 1: single bed

A large, spreading acacia tree stands prominently in the middle ground of a savanna landscape. The foreground is filled with tall, green grass, and a hyena is seen walking through it. The background is a dense thicket of green bushes and trees under a cloudy sky.

WHY GO THERE?

- ✓ Relax in the African bush
- ✓ Boutique lodge
- ✓ Air-conditioned bungalows
- ✓ Private plunge pools & rooftop terraces
- ✓ Perfect place to stay to explore Selous Game Reserve/Nyerere NP
- ✓ Great facilities
- ✓ Close to the famous Rufiji River
- ✓ Short drive from Mtemere airstrip / Gate
- ✓ Swimming pool
- ✓ Only 30 minutes flight from Zanzibar
- ✓ Complimentary use of pool towels, safety deposit box, and Wi-Fi

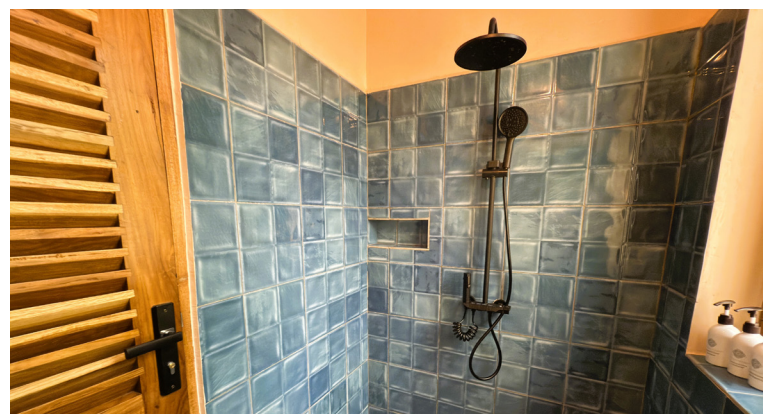
Luxury Bungalow

Maximum occupancy
3 guests



The Luxury Bungalows feature a king-size bed, a single sofa bed and a furnished patio. The ensuite bathroom includes a shower, toilet, and washbasin. The in-room freestanding bathtub offers the opportunity to relax and enjoy the views of the outdoors. Unwind by the private plunge pool or enjoy the bush vistas from the rooftop terrace.

There are 20 units available.



- ✓ King-size bed (180 x 200)
- ✓ Single sofa bed
- ✓ Air-conditioning
- ✓ Free Wi-Fi
- ✓ Smart TV
- ✓ Fully equipped bathroom with shower
- ✓ Bathtub with a view of the outdoors
- ✓ Coffee and tea-making facilities
- ✓ Minibar, stocked once daily with a selection of beverages
- ✓ Charging points for mobile phones and cameras
- ✓ Safety deposit box
- ✓ Quality mattress and bed linen
- ✓ Mosquito screens
- ✓ Furnished patio
- ✓ Rooftop terrace
- ✓ Private plunge pool
- ✓ Total room size 48 sqm



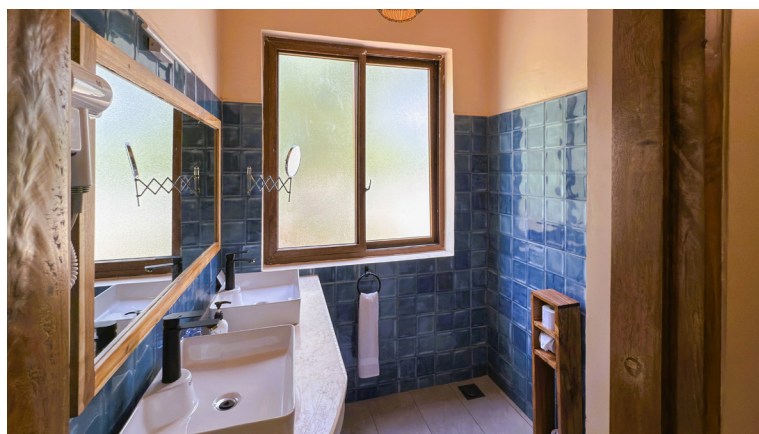
Premium Bungalow

Maximum occupancy
6 guests



Perfect for families or small groups, this room category features a spacious two-bedroom bungalow with a king-size bed, two single beds, and a sofa bed. For added convenience, it includes a kitchenette, an indoor living area, and a furnished patio with a plunge pool. The rooftop terrace offers an ideal space to unwind and enjoy the surrounding bush scenery. The main ensuite bathroom includes a bath, shower, toilet, and washbasin, while the second ensuite bathroom features a shower and toilet.

There are 5 units available.



- ✓ King-size bed (180 x 200) and two single beds (90 x 200)
- ✓ Double sofa bed
- ✓ Kitchenette
- ✓ Air-conditioning
- ✓ Free Wi-Fi
- ✓ Smart TV
- ✓ Two fully equipped ensuite bathrooms, one with shower and bathtub and a second with a shower
- ✓ Coffee and tea-making facilities
- ✓ Minibar, stocked once daily with a selection of
- ✓ beverages
- ✓ Inside living area
- ✓ Charging points for mobile phones and cameras
- ✓ Safety deposit box
- ✓ Quality mattress and bed linen
- ✓ Mosquito screens
- ✓ Furnished patio
- ✓ Rooftop terrace
- ✓ Private plunge pool
- ✓ Total room size 95 sqm





Daily flights from Zanzibar to Selous Mtemere airstrip

We operate daily flights from Zanzibar to Selous Game Reserve/Nyerere National Park, early in the morning and late in the afternoon, presenting the ideal opportunity to enjoy a Beach & Bush Getaway!

The African Wild Dog

The expansive Selous Game Reserve/Nyerere National Park provides an ideal habitat for the rare and dynamic African Wild Dog, hosting the world's largest population of these creatures. These dogs are known for their democratic and social behaviour, often congregating in packs of around ten individuals or more. They are opportunistic predators, primarily hunting medium-sized ruminants like gazelles. No two wild dogs have the same mark, making it easy to identify individuals. Their remarkably large ears serve not only to hear well but also to cool the photogenic animal, just like the elephant.





Selous Game Reserve / Nyerere National Park

Nestled in Tanzania lies the captivating Selous Game Reserve, a pristine haven awaiting discovery. Sprawling across vast expanses, it remains largely untouched, with only a mere 8% devoted to photographic exploration. Meandering gracefully through this wilderness is the mighty Rufiji River, coursing over 600 kilometres before embracing the Indian Ocean.

This dynamic ecosystem thrives, harbouring over 2,000 plant species and an impressive array of 350 bird and reptile species. Within its depths roam a diverse mix of wildlife, from the African forest elephant and the lion to the graceful Maasai giraffe and the spirited African wild dog. Unveil the secrets of Selous, where nature's wonders await at every turn.

Highlights



Boutique bush lodge



Private plunge pools



Daily, direct Zanzibar flights, early morning and late afternoon



Swimming pool



All rooms have air-conditioning



Variety of activities available



Free Wi-Fi



Massage facilities



Boat safaris



Bordering the NP

Activities

BOAT SAFARI

Embark on a cruise along a river with our captivating boat safari - an experience sure to be a highlight of your journey. Our skilled captain will navigate you through the magnificent waterways, offering glimpses of the vibrant wildlife that thrives here. Our sturdy boat, equipped with a sun canopy, ensures your comfort and safety as you cruise along. Keep your senses keen for sightings of crocodiles, hippos, and playful monkeys along the riverbanks. With the rich biodiversity, the rivers are a haven for numerous bird species, providing ample opportunities for birdwatching enthusiasts. Immerse yourself in the tranquillity of this unique setting and witness wildlife in its natural habitat with our unforgettable boat safari.



WALKING SAFARI

It's time to lace up your walking shoes and join us for a journey of discovery through the untamed wilderness of Africa. A guided bushwalk is an intimate experience offering the unique opportunity to connect with nature and its inhabitants from a different perspective.

Accompanied by our knowledgeable guide and a Maasai, you'll venture from the camp into the surrounding wilderness, where they'll share insights into the flora and fauna of the region. From majestic trees to

colourful birdlife, and from big game to tiny creatures, they'll unveil the secrets of the African bush, fostering a deeper appreciation for its intricate ecosystem. Keep your eyes peeled for various bird species, insects, and other wildlife that inhabit this remarkable landscape. Walking through nature offers a sensory journey unlike any other. Listen to the symphony of sounds in the bush, inhale the fragrant scents of the plants, and feel the gentle breeze against your skin.

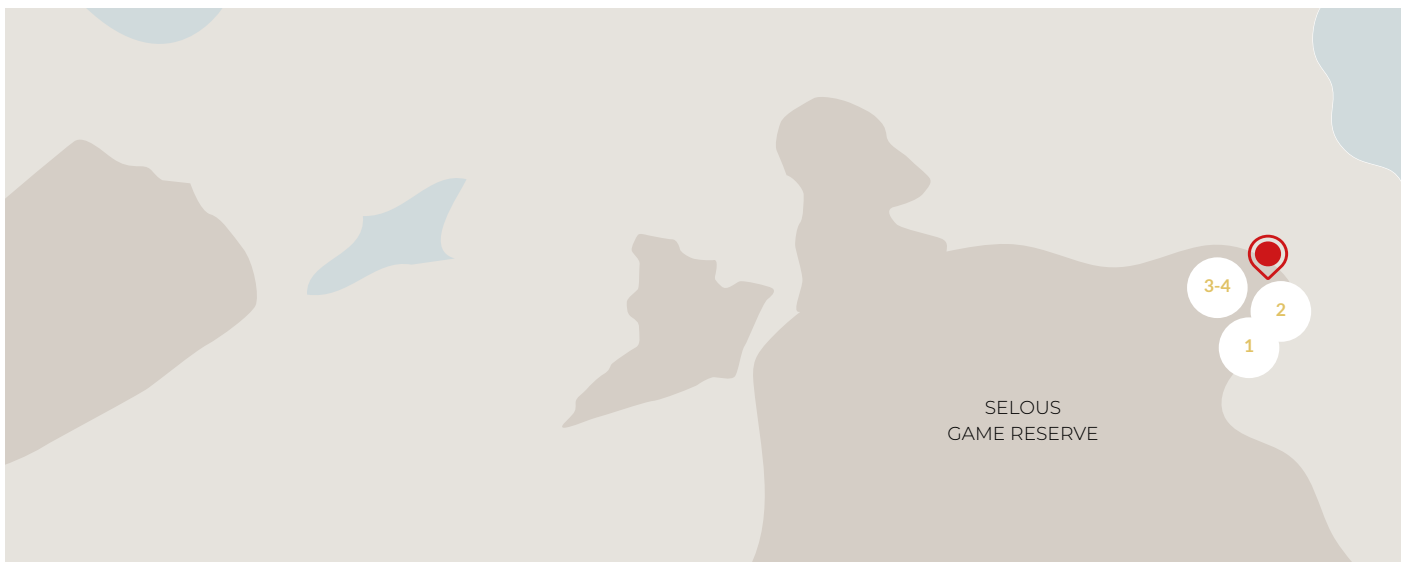
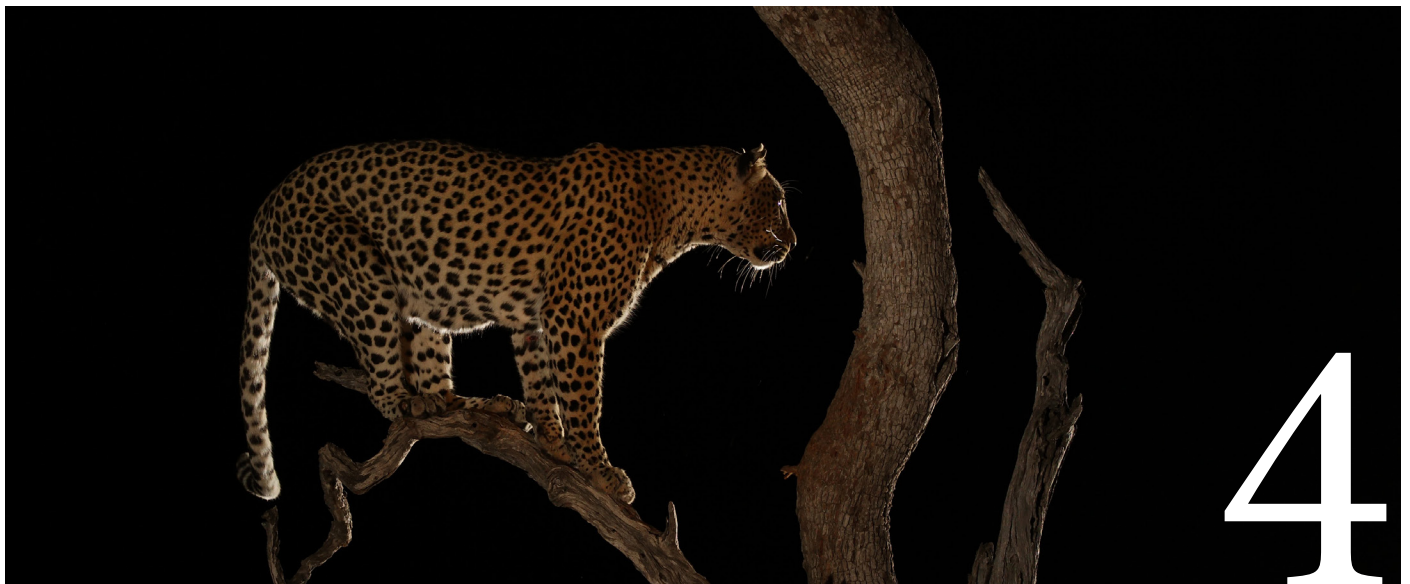


GAME DRIVE SELOUS GAME RESERVE / NYERERE NATIONAL PARK

Embark on a full-day game drive, complete with lunch in the bush. Keep a lookout for sightings of lions, crocodiles, and African wild dogs, while keen birdwatchers will be enthralled with identifying the many different bird species.

NIGHT GAME DRIVE

Seize the chance to venture out into the area after dark. It's a wonderful sensation to be surrounded by the remote and untouched wilderness as night falls. Listen to the symphony of sounds from various animals, observe the mesmerising glow of nocturnal eyes, and experience the thrill of encountering wildlife under the moonlit sky. This is an opportunity for sightings of elusive nocturnal animals like aardvarks, bush pigs, and spotted hyenas, and if you're lucky... perhaps even a leopard!



Safari Jeep

An open-sided safari jeep, including driver and fuel, is available for hire on request. Open-sided 4WD vehicles enhance visibility and allow for unobstructed photography from every angle. Our driver guides are very knowledgeable and will ensure you have as much time as you need to ask questions, take pictures and enjoy the incredible landscape.



Distance in km.	Africa Safari Arusha	Africa Safari Lake Natron	Africa Safari Maasai Boma	Africa Safari Serengeti Ikoma	Africa Safari Serengeti Kusini	Africa Safari South Serengeti	Africa Safari Karatu	Africa Safari Rift Valley	Africa Safari Lake Manyara	Africa Safari Manyara Escarpment	Dar Es Salaam	Flight time from/to Zanzibar
Africa Safari Nyerere	787	1007	1137	1128	1100	1055	935	945	901	911	180	30-50 minutes

DEVELOPMENTS:

In 2019, Tanzania expanded its conservation efforts by establishing its largest national park in the northern part of the Selous Game Reserve. This move, endorsed by the Tanzanian government, aimed to bolster tourism in the southern region. Supported by the World Bank, the initiative focuses on enhancing protected area management through infrastructure development, community empowerment, and conservation measures. The promotion of nature-based tourism also fosters economic diversification and livelihood improvements within local communities.



Most common wildlife in the area



Elephant
Buffalo
Wildebeest
Zebra
Giraffe
Hyena
African wild dog



Impala
Kudu
Dik-Dik
Eland
Reedbuck
Hartebeest
Waterbuck



Warthog
Hippo
Crocodile
Lion
Leopard
Baboon
Mongoose

*A massive variety
of birds and birds
of prey*

MONTHS	Jan	Feb	Mar	Apr	May	Jun	Jul	Aug	Sep	Oct	Nov	Dec
Game drives	.	.	●	●	●	.	●	●	●	●	.	.
Cat sightings
Boat safari
Visit to Beho Beho hotspots	.	.	●	●	●
Dry season							
Green season			.	.	.						○	○

● Best Game Drives ● Subject to weather conditions ○ Half month conditions

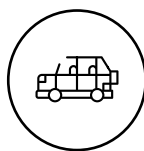


Airstrip / Airport

-
Nearest airstrip - Mtemere
airstrip - 8 km / 0.25 driving hr
by vehicle

.....
Alternative airstrip - Siwandu
airstrip - 20 km / 1 driving hr by
vehicle

.....
International airport - Dar es
Salaam-Julius Nyerere (JNIA) -
168 km / 5 driving hrs by vehicle



From Africa Safari Nyerere to...

-
Dar es Salaam - 180 km

.....
Rufiji River - 3 km

.....
Beho Beho hotspots - 40 km

.....
Zanzibar - 200 km - 0.5 hr flight



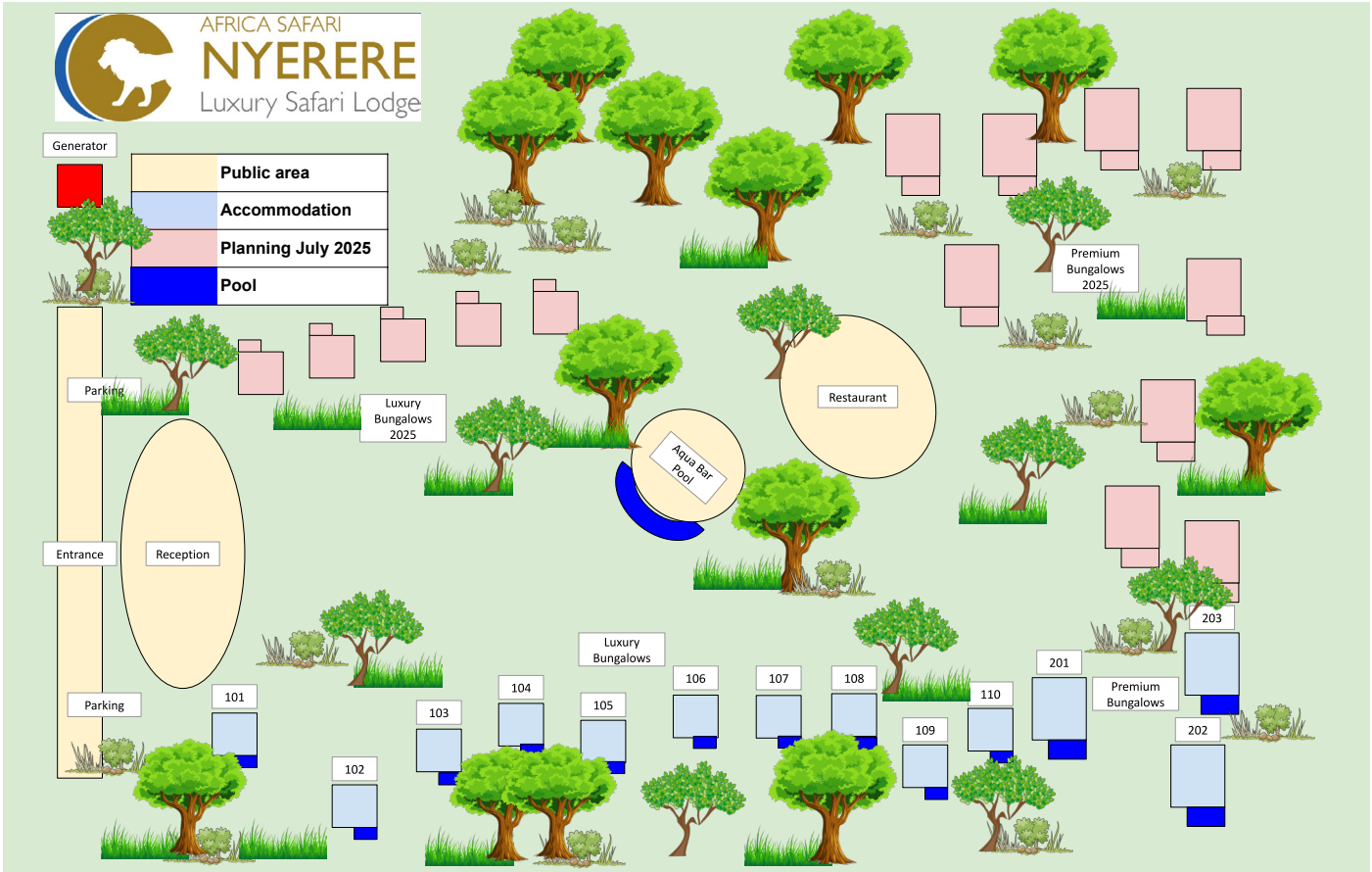
Good to know

-
Altitude: 500 mtr
Day time temp: +/- 30°C
Night time temp: +/- 15°C
Green season: Mar, Apr and May

.....
ACCOMMODATION
Luxury Bungalow (20)
Premium Bungalow (5)

.....
MEAL PLAN
Premium All-inclusive

.....
CREDIT CARD - CURRENCY
Master card / Visa card / Online
payment
TZS, USD and Euro



Other accommodations in the Paradise & Wilderness group



TANZANIA

NORTHERN CIRCUIT:

1. Africa Safari Arusha
2. Africa Safari Lake Natron
3. Africa Safari Maasai Boma
4. Africa Safari Serengeti Ikoma
5. Africa Safari Serengeti Kusini
6. Africa Safari South Serengeti
7. Africa Safari Karatu
8. Africa Safari Manyara Escarpment

9. Africa Safari Manyara Migombani

10. Africa Safari Lake Manyara
11. Africa Safari Rift Valley
12. Africa Safari Tarangire (*)
13. Africa Safari Kilimanjaro Airport (*)

SOUTHERN TANZANIA

14. Africa Safari Saadani
15. Africa Safari Selous
16. Africa Safari Nyerere
17. Africa Safari Tagalala Hot Springs (*)

(*) Opening soon

ZANZIBAR/PEMBA

1. Reef & Beach Resort ★★★★★
2. Paradise Beach Resort ★★★★★
3. Zanzibar Bay Resort ★★★★★
4. Dream of Zanzibar ★★★★★
5. Shaba Boutique Hotel ★★★★★
6. Corals of Zanzibar (*) ★★★★★
7. Paradise Island (*) ★★★★★
8. Pemba Farm Estate (*) ★★★★★
9. Mkoani Guesthouse (*)

(*) Opening soon



www.paradise-wilderness.com
info@paradise-wilderness.com

+255 699 065 829



More
contact
info



Website
Nyerere



Photo
Gallery



Price
List

